



AG CLUB VILLAS

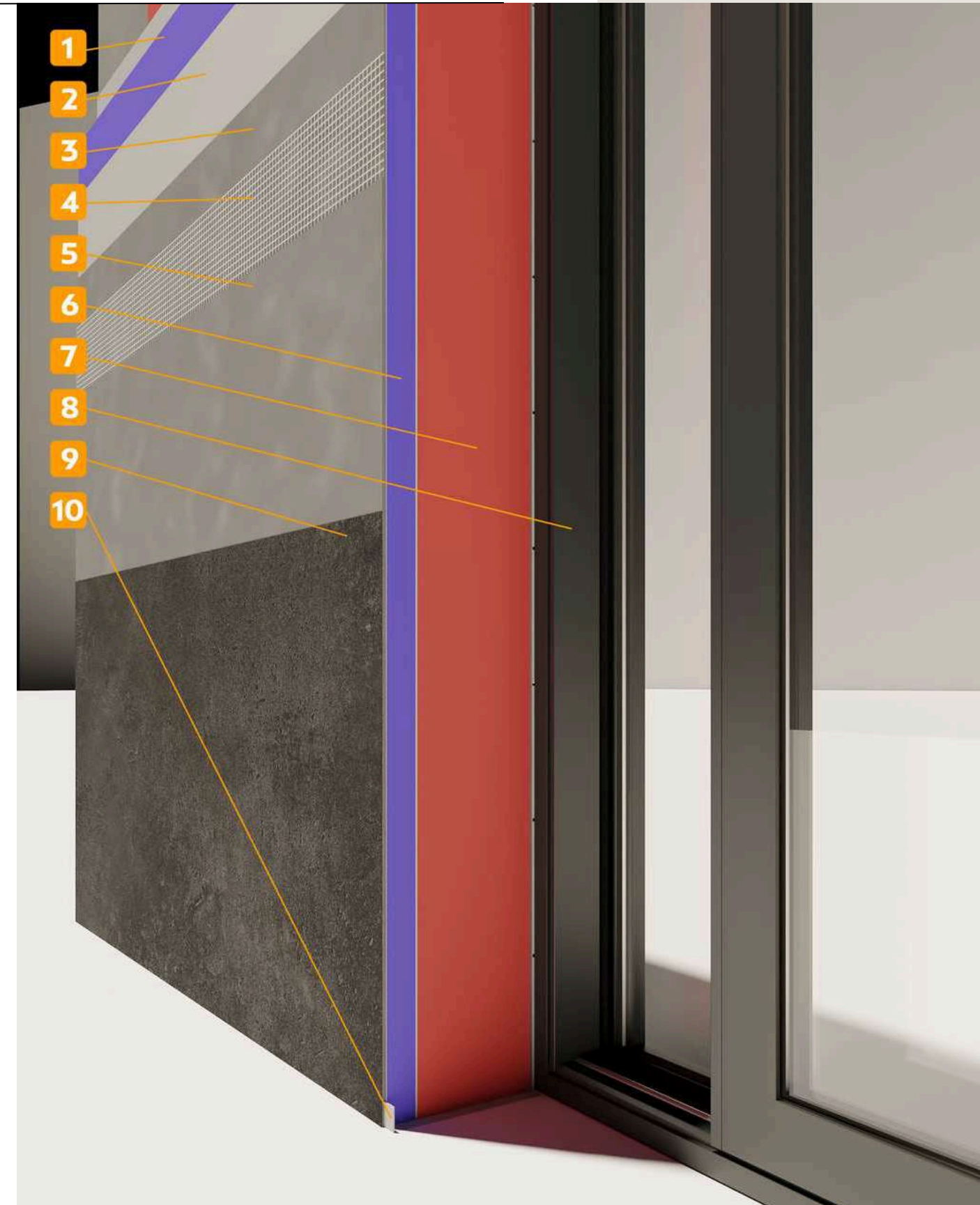
TECHNICAL SPECIFICATIONS



1. Reinforced concrete column
400x400 mm, 16 mm reinforcement
2. Foam block 200x200x600 mm,
reinforced with 10 mm
reinforcement every 5 rows
3. Priming coating
4. Adhesive
5. Plastic anchors with dowels for
fastening
6. 200 mm foam polystyrene-based
insulation
7. Adhesive
8. 50 mm foam polystyrene-based
insulation
9. Priming coating
10. Putty
11. Fiberglass reinforcing mesh
12. Putty
13. Final coating.
14. Window frame



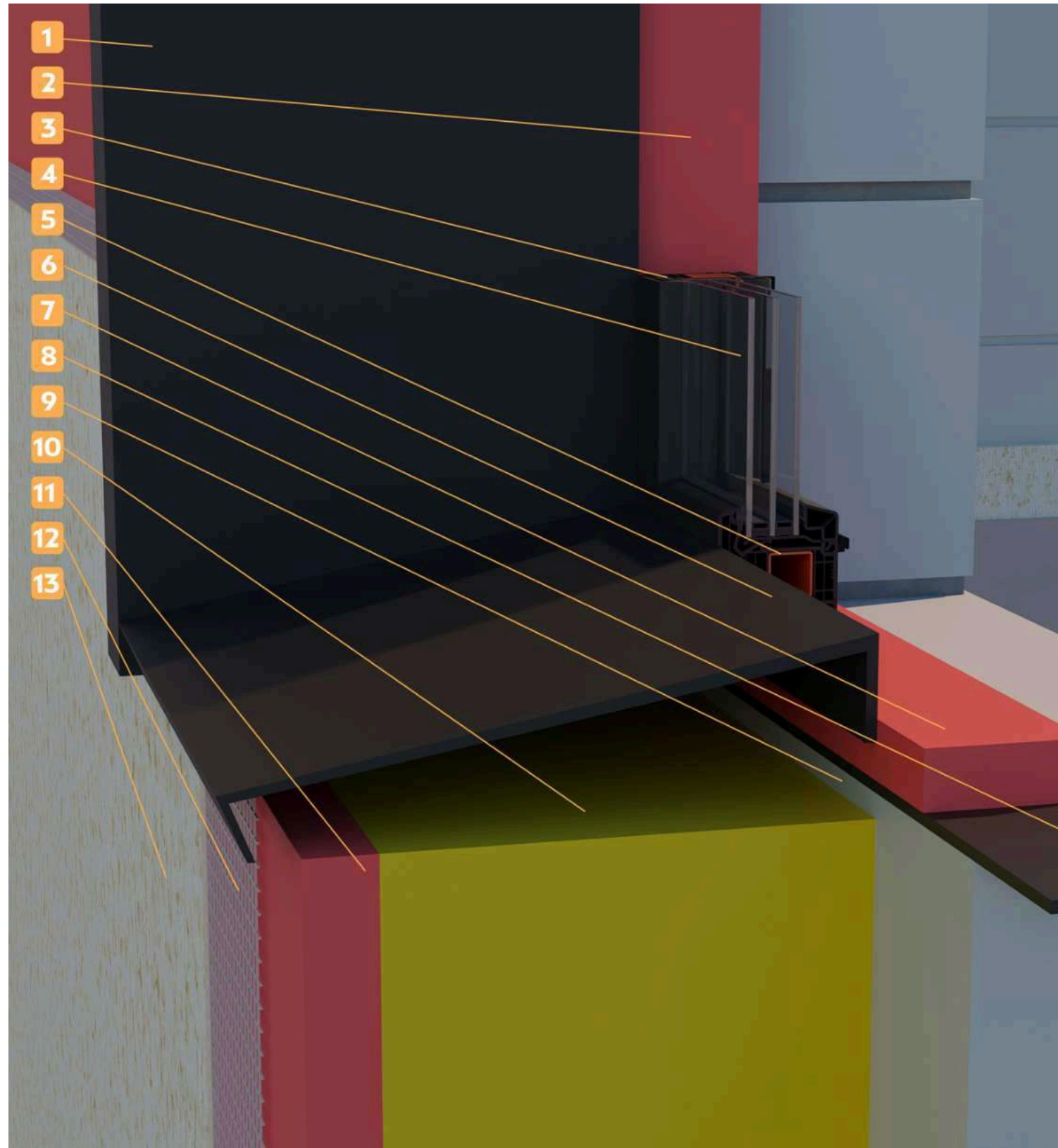
1. 50 mm foam polystyrene-based insulation
2. Priming coating
3. Putty
4. Fiberglass reinforcing mesh
5. Putty
6. 50 mm foam polystyrene-based insulation
7. 200 mm foam polystyrene-based insulation
8. Sliding structure frame
9. Final coating
10. Mounting plate 250x50 mm.



1. Vertical drip edge (aluminum composite panel 3 mm)
2. Window element in section
3. Horizontal drip edge (aluminum composite panel 3 mm)
4. 20 mm extruded polystyrene insulation
5. Butyl tape 150 mm
6. Foam block 200x200x600 mm
7. Block adhesive
8. Reinforcement of block with 2 rebars 10 mm, every 5 rows (1 meter)



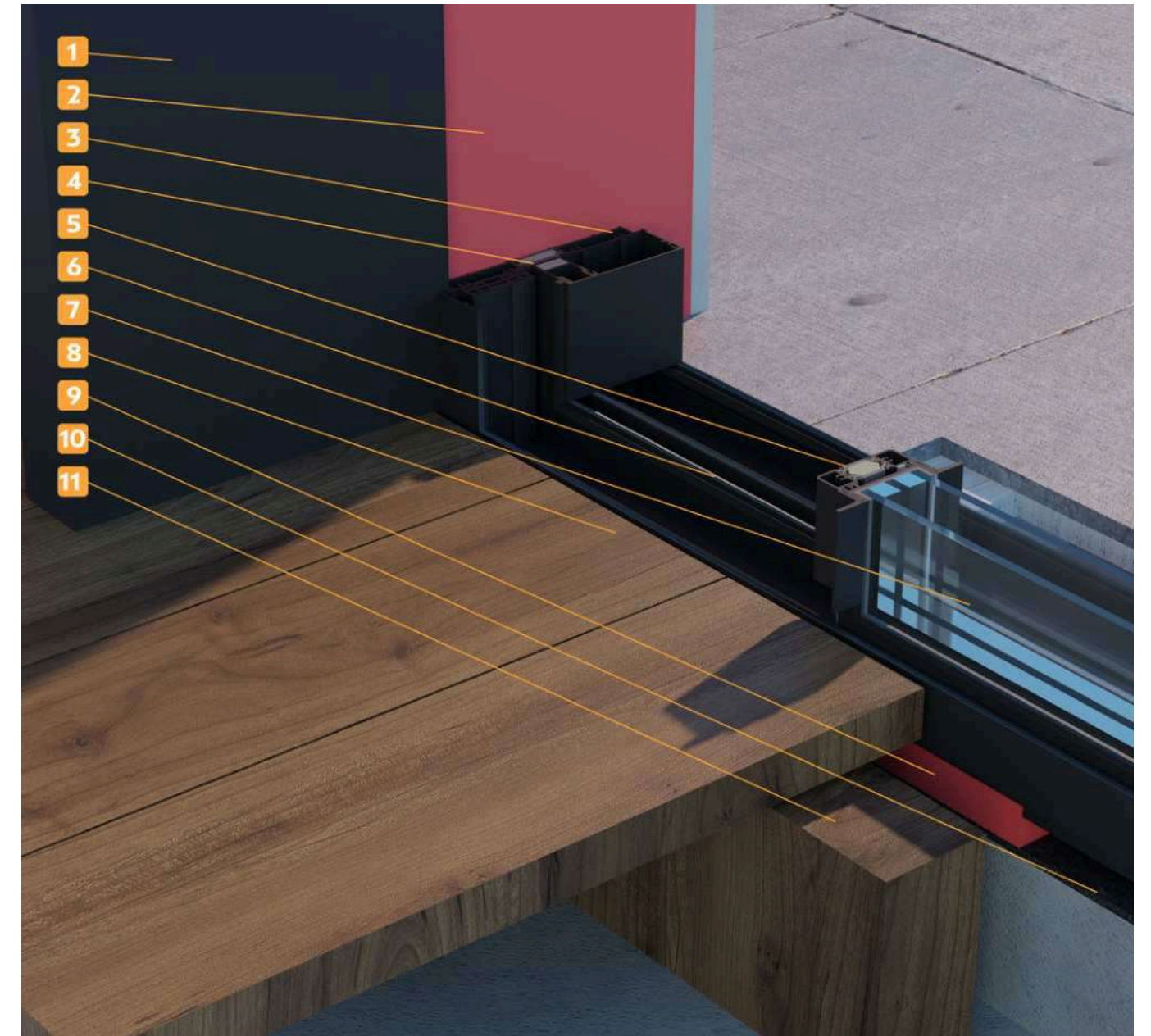
9. Final wall painting
10. Interior plastering
11. Final floor covering - ceramic granite 12 mm 1200x2700 mm
12. Adhesive
13. Levelling cement screed
14. Reinforcement of screed with 6 mm steel mesh
15. 50 mm extruded polystyrene insulation
16. Adhesive
17. Priming coat
18. Reinforced concrete slab, reinforcement with 12 mm rebar

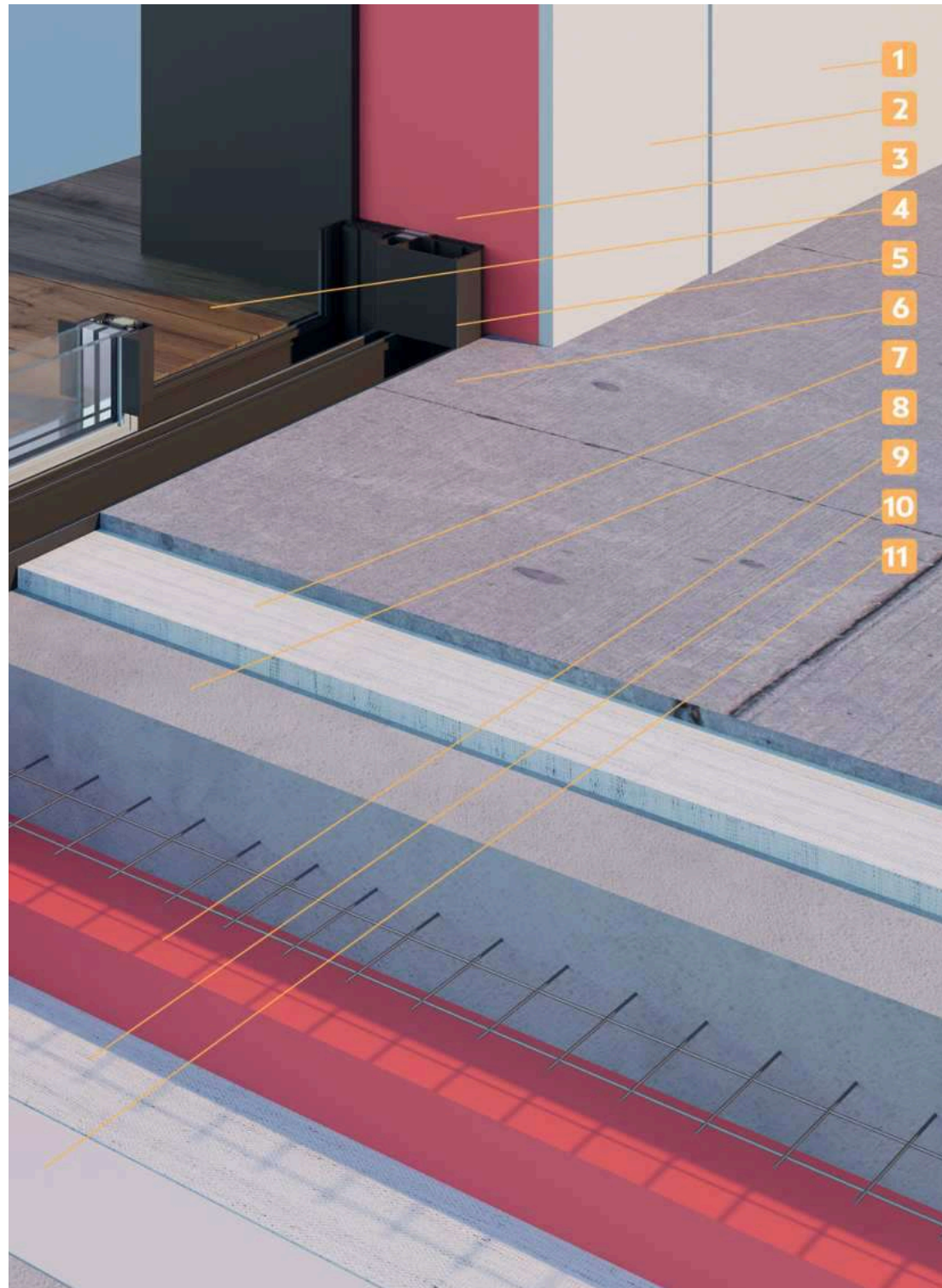


1. Vertical drip edge (aluminum composite panel 3 mm)
2. 20 mm extruded polystyrene insulation
3. Window element in section
4. Double glazed unit with two 8 mm tempered glass, argon filling, and multifunctional coating
5. Thermal bridge preventing condensation
6. Horizontal drip edge (aluminum composite panel 3 mm)
7. 20 mm extruded polystyrene insulation
8. Butyl tape 150 mm
9. Foam block 200x200x600 mm
10. 200 mm extruded polystyrene insulation
11. 50 mm extruded polystyrene insulation
12. Fiberglass mesh reinforcement
13. Putty



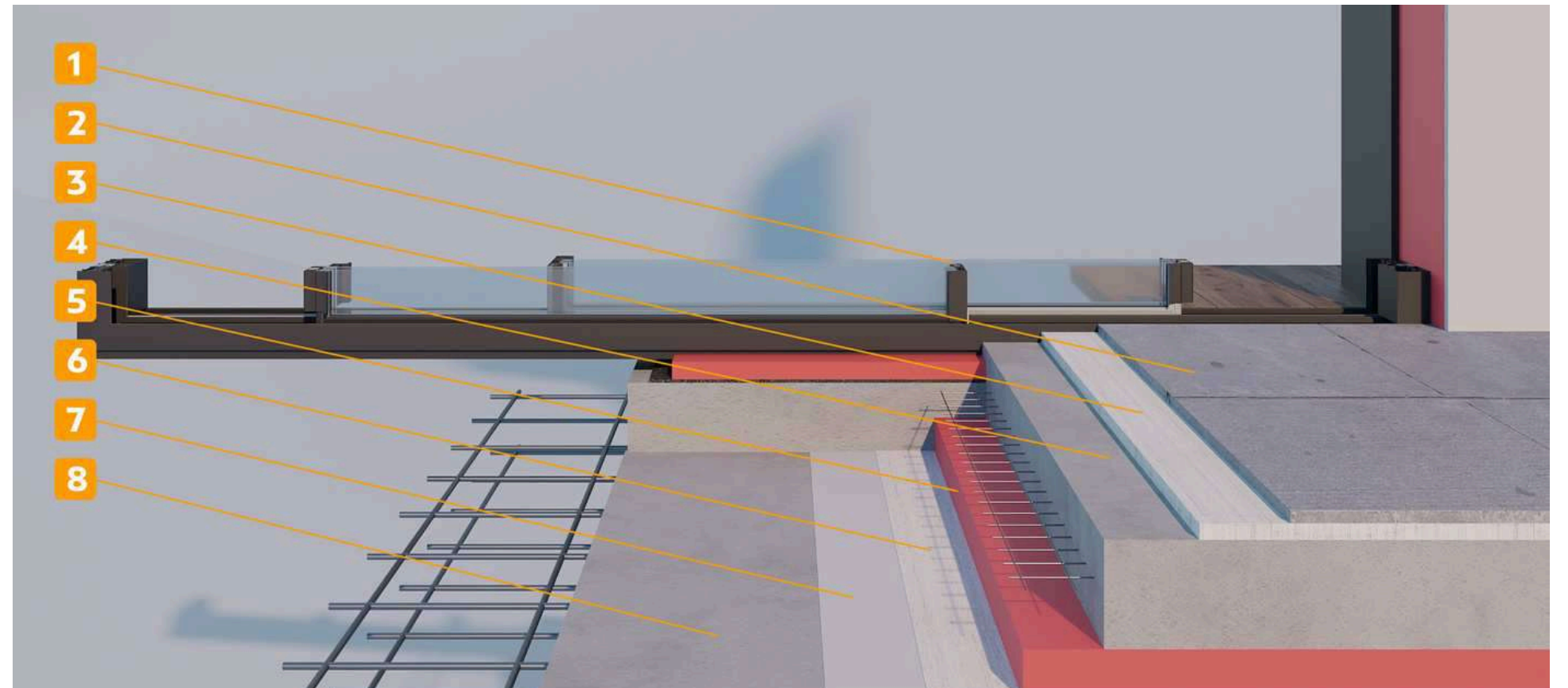
1. Vertical drip edge (aluminum composite panel 3 mm)
2. 20 mm extruded polystyrene insulation
3. Sliding frame structure with thermal break
4. Thermal break preventing condensation
5. Lift-and-slide door leaf with thermal break
6. Stainless steel rail
7. Double glazed unit with two 8 mm tempered glass, argon filling, and multifunctional coating
8. Terrace board
9. 20 mm extruded polystyrene insulation
10. Butyl tape 150 mm
11. Support for terrace board



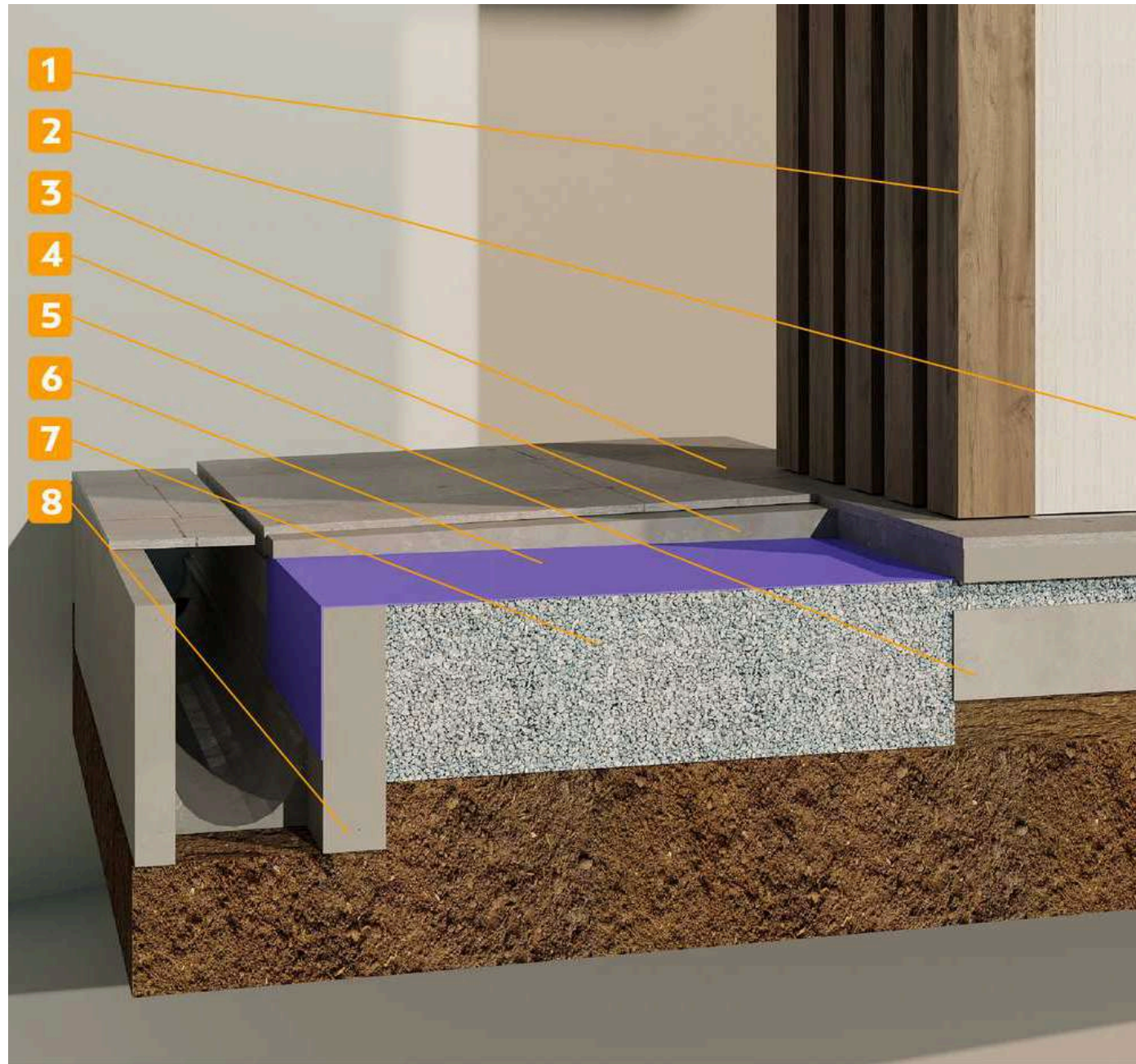


1. Wall painting
2. Interior plastering
3. Insulation based on extruded polystyrene 20 mm
4. Terrace board
5. Sliding frame structure
6. Final floor covering - ceramic granite 12 mm 1200x2700 mm
7. Adhesive
8. Cement screed floor, reinforced with 6 mm steel mesh
9. Insulation based on extruded polystyrene 50 mm
10. Adhesive
11. Priming coat





1. Sliding structure
2. Final floor covering - ceramic granite 12 mm 1200x2700 mm
3. Adhesive
4. Cement screed floor, reinforced with 6 mm steel mesh
5. Insulation based on extruded polystyrene 50 mm
6. Adhesive
7. Priming coat
8. Reinforced concrete slab, reinforcement with 12 mm rebar



1. Decorative elements "wood-like" 200x200 mm
2. Terrace board
3. Final outdoor covering - ceramic granite 12 mm 1200x1200 mm
4. Cement screed with 6 mm steel mesh reinforcement
5. Floor slab 300 mm with 16 mm reinforcement
6. Waterproofing membrane
7. Gravel backfill
8. Drainage channel

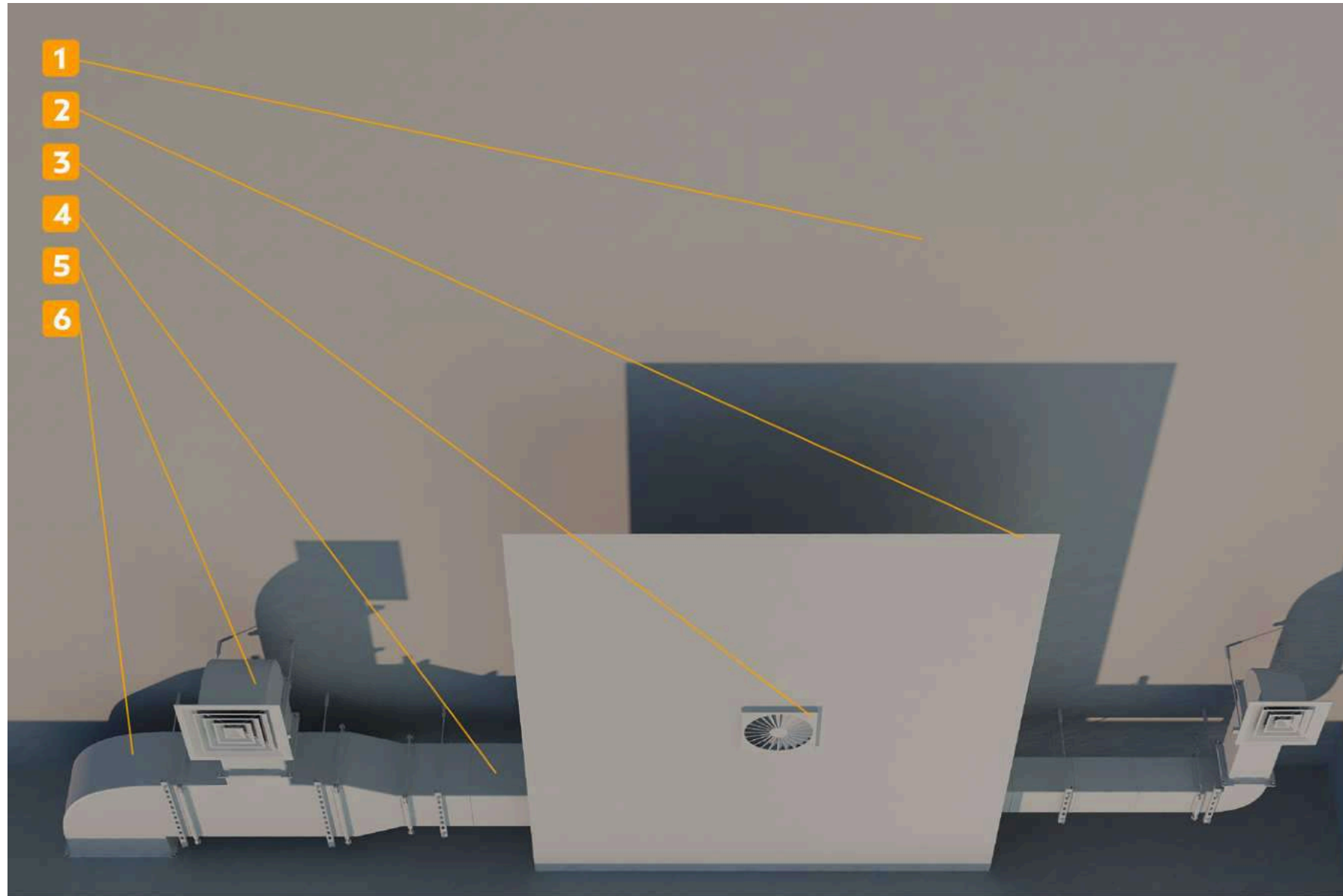


10/16

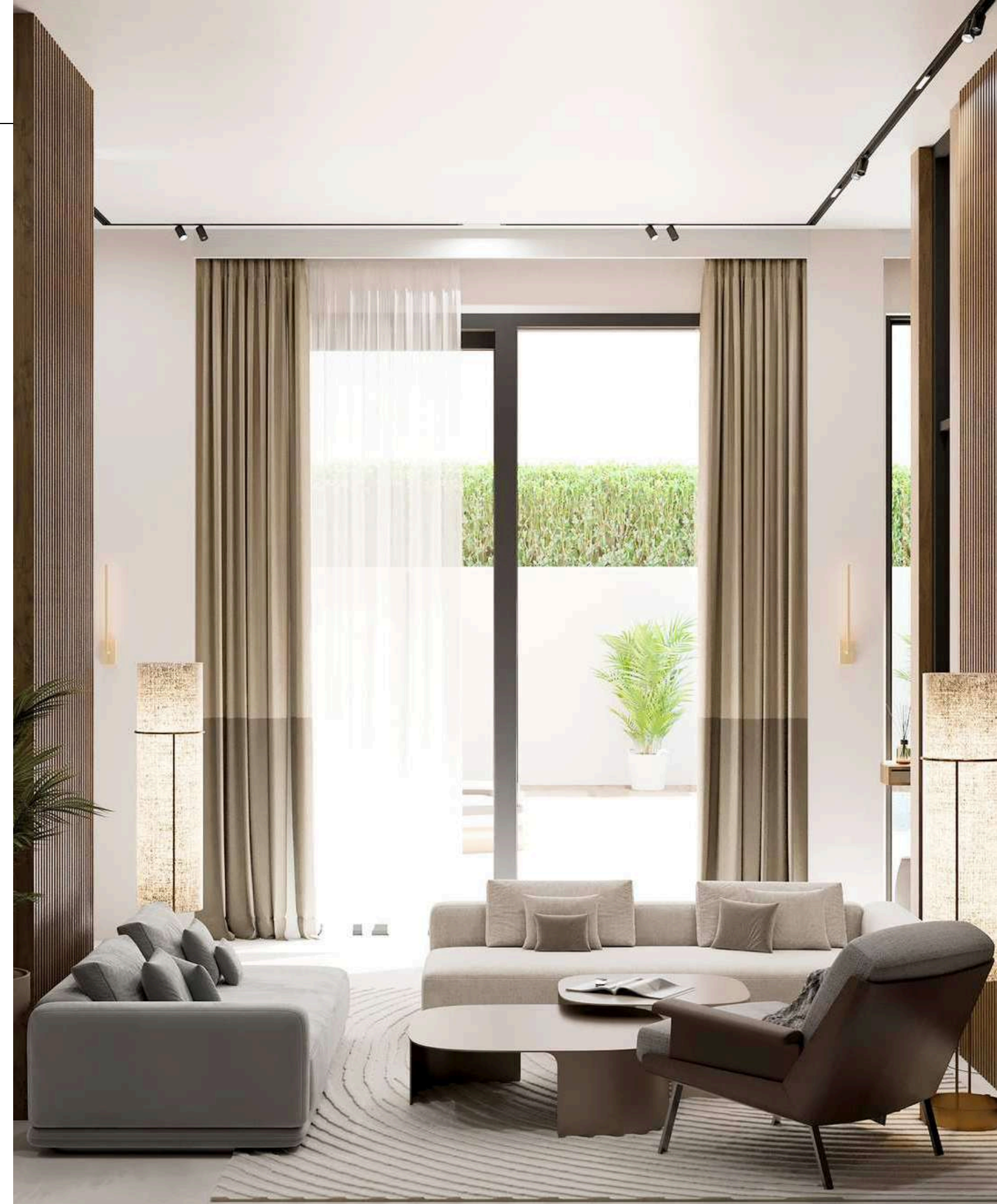


1. Aluminum profile railing
2. Triple-layer tempered glass 8+6+8
3. Aluminum profile
4. Aluminum drip edge



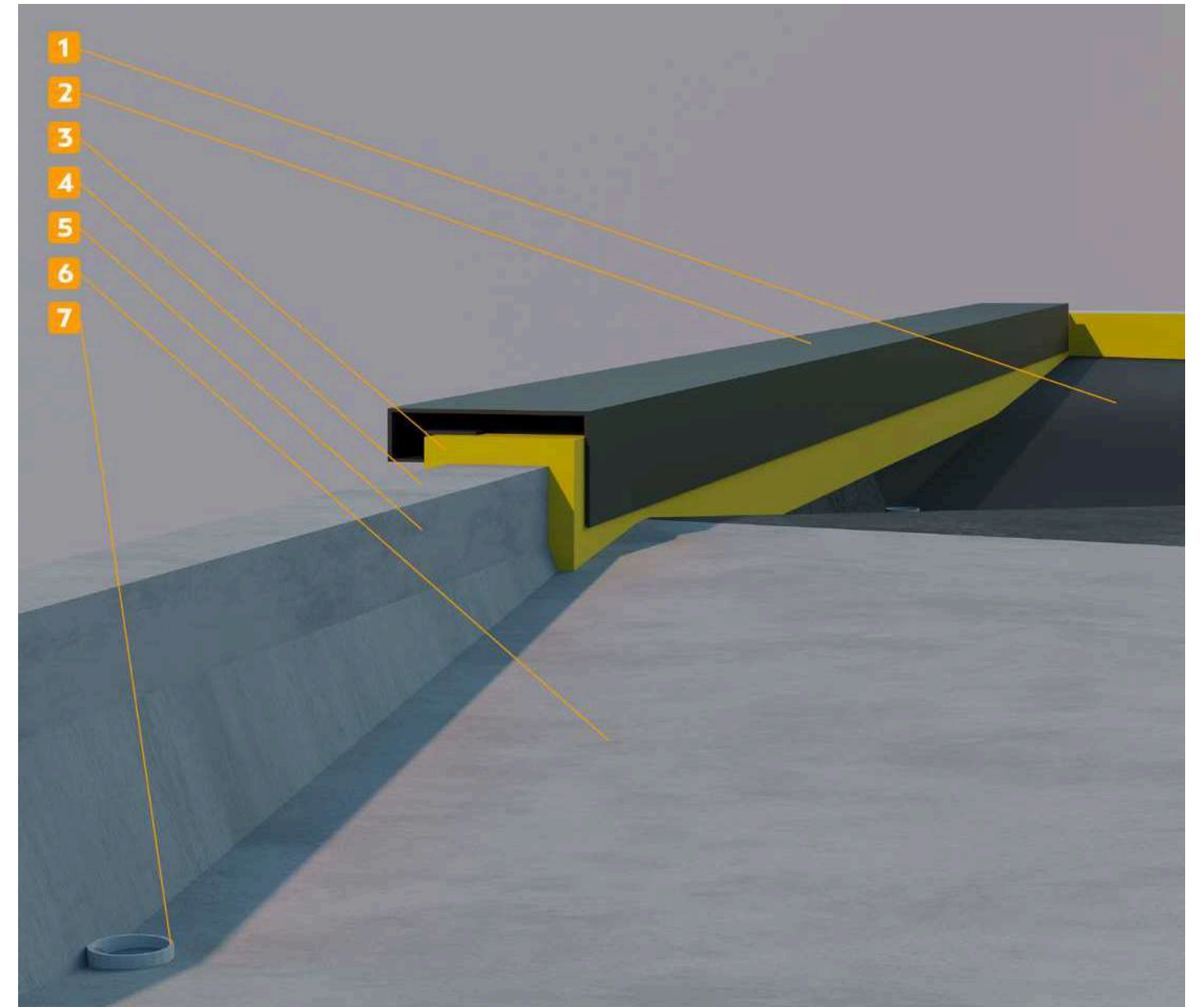


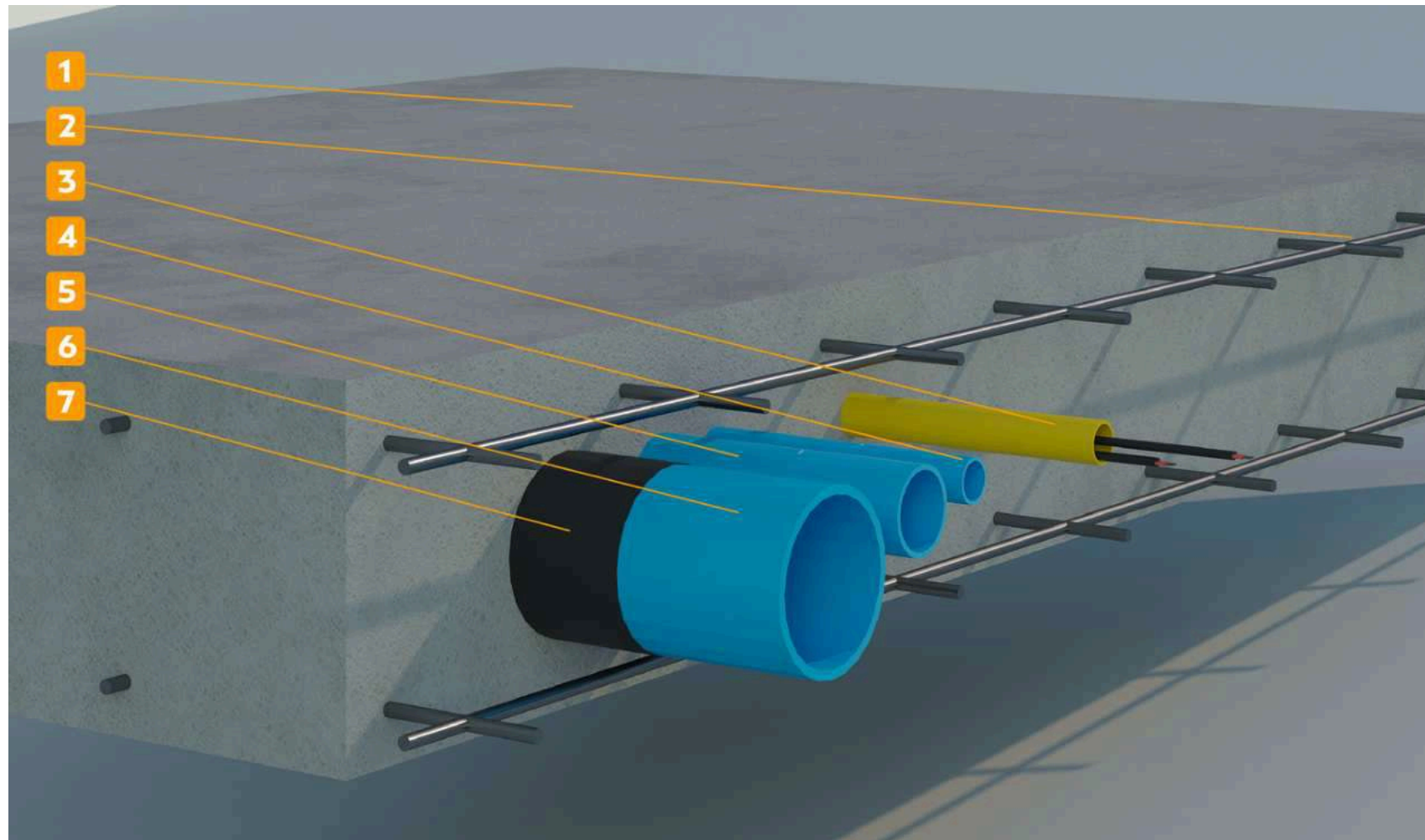
1. Reinforced concrete ceiling slab
2. Ceiling
3. Ventilation opening
4. Ventilation pipe with sound and hydro insulation
5. Ventilation outlet
6. Room exit



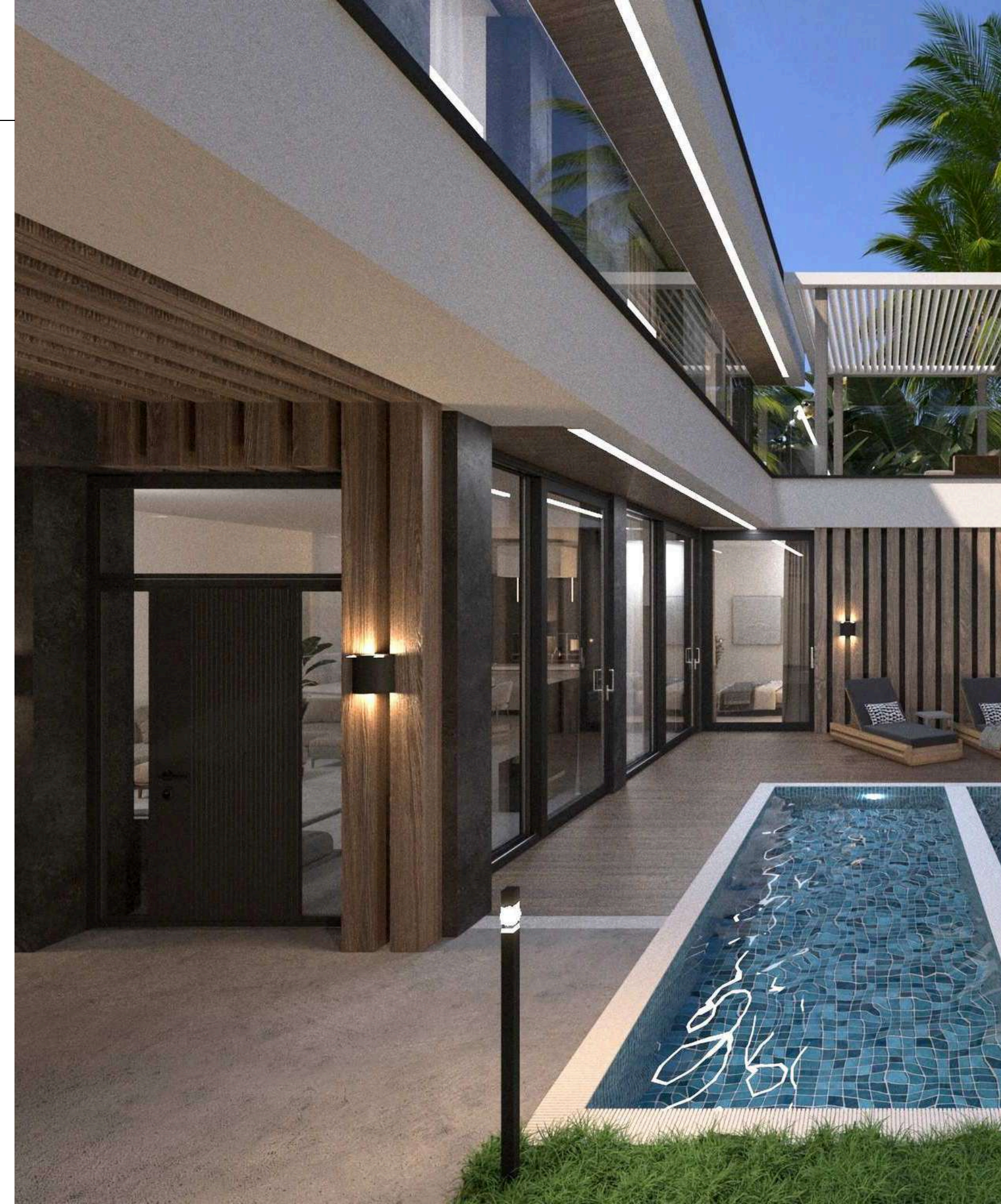


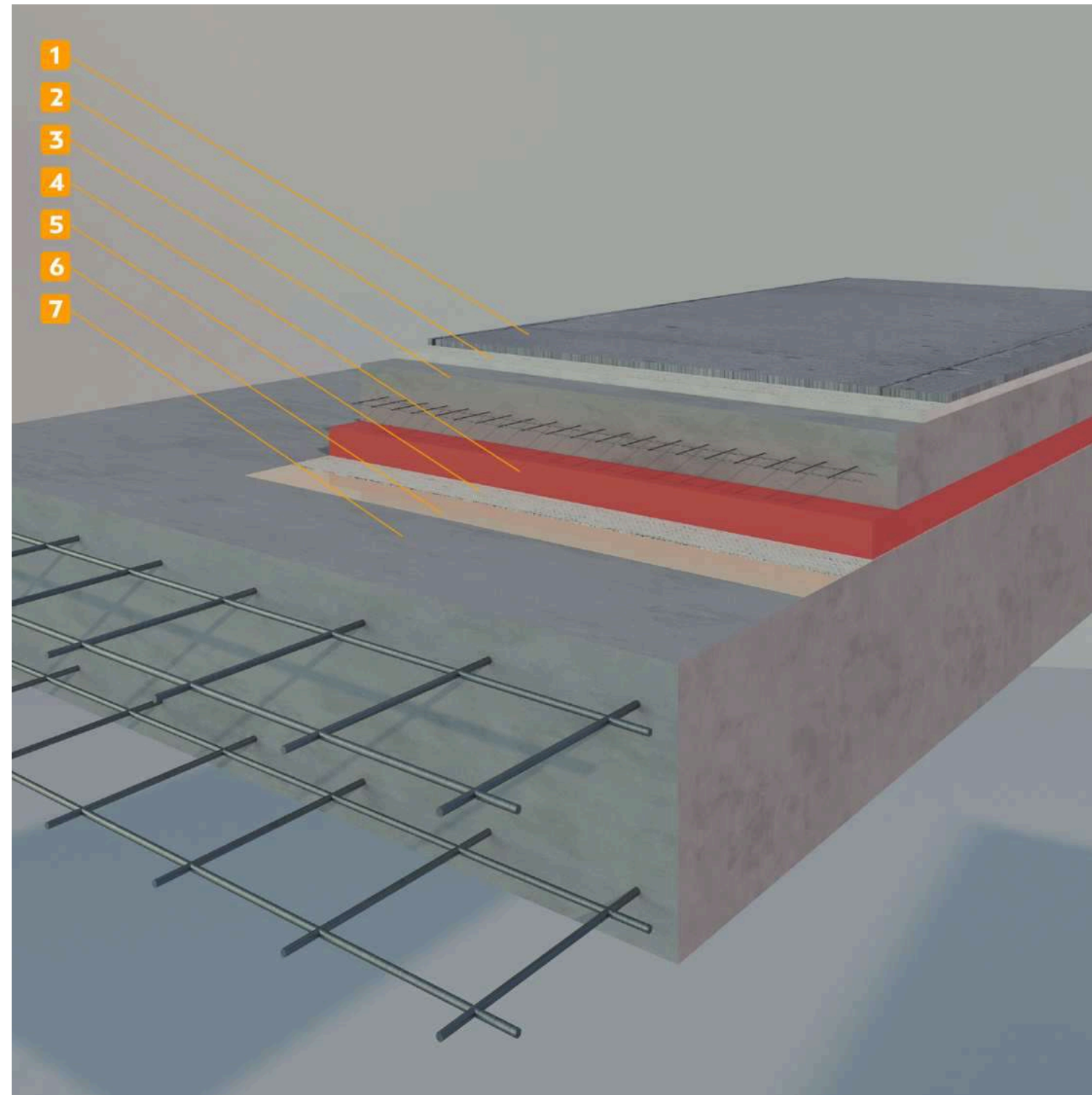
1. Waterproofing membrane
2. Aluminum composite panel drip edge cover 3 mm
3. Insulation based on extruded polystyrene 50 mm
4. Plastered foam block 200x200x600 mm
5. Adhesive
6. Cement screed slope
7. Drainage hole





1. Reinforced concrete foundation slab 300 mm
2. 12 mm reinforcement bars
3. 25 mm pipe for electrical communications
4. 25 mm water pipe
5. 56 mm sewer pipe
6. 100 mm sewer pipe
7. Butyl-based vibration and sound insulation





1. Final floor covering - ceramic granite
12 mm 1200x2700 mm
2. Adhesive
3. Reinforced screed 100 mm
4. Insulation based on extruded
polystyrene 50 mm
5. Adhesive
6. Priming coat
7. Foundation slab 300 mm,
reinforcement top and bottom with 12
mm rebar

1. Waterproof acrylic coating
2. Water-resistant acrylic material
3. Sloping screed, reinforced with 4 mm steel mesh
4. Insulation based on extruded polystyrene 50 mm
5. Adhesive
6. Priming coat
7. Roof slab 200 mm, reinforcement top and bottom with 12 mm rebar

